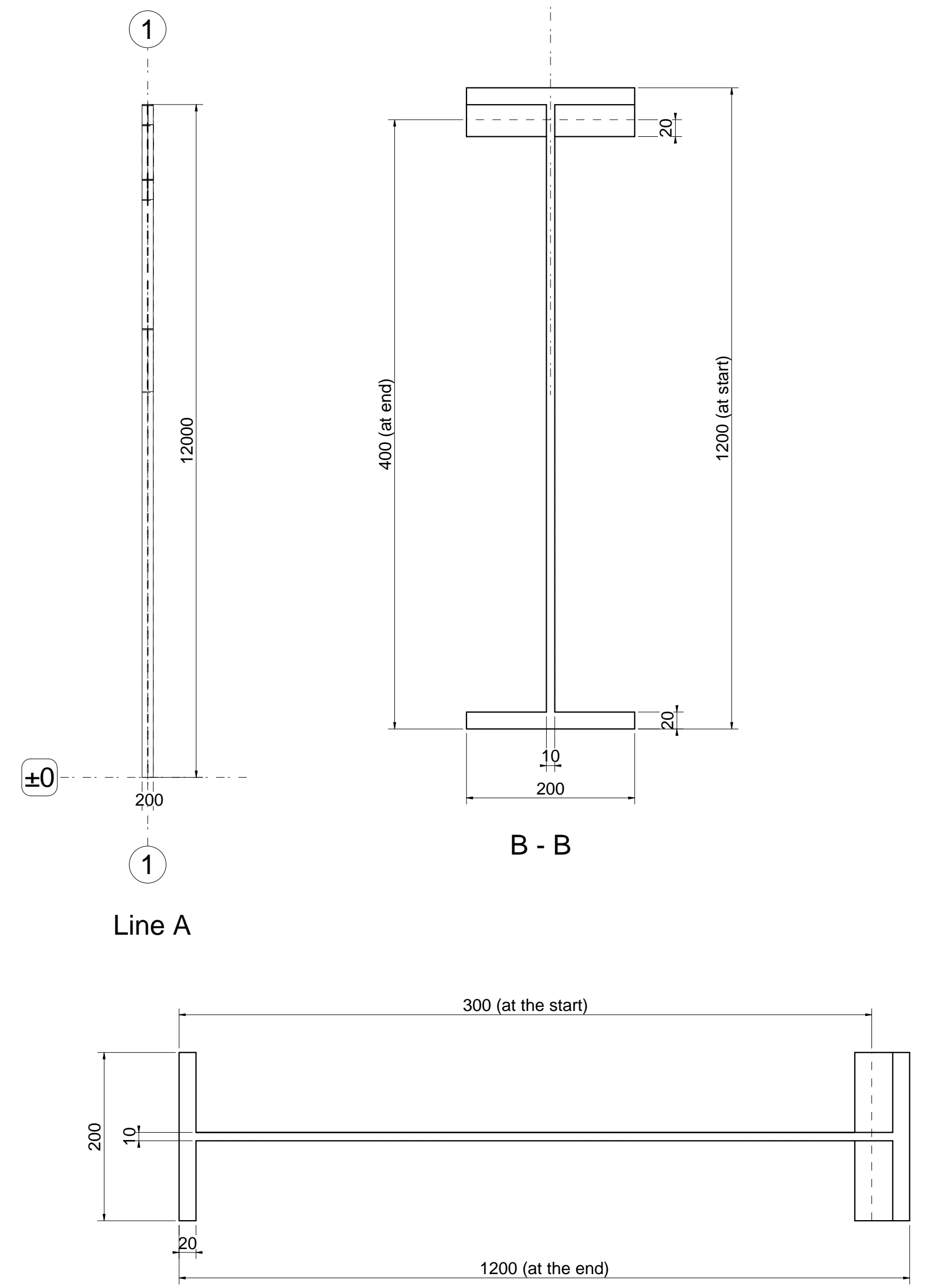
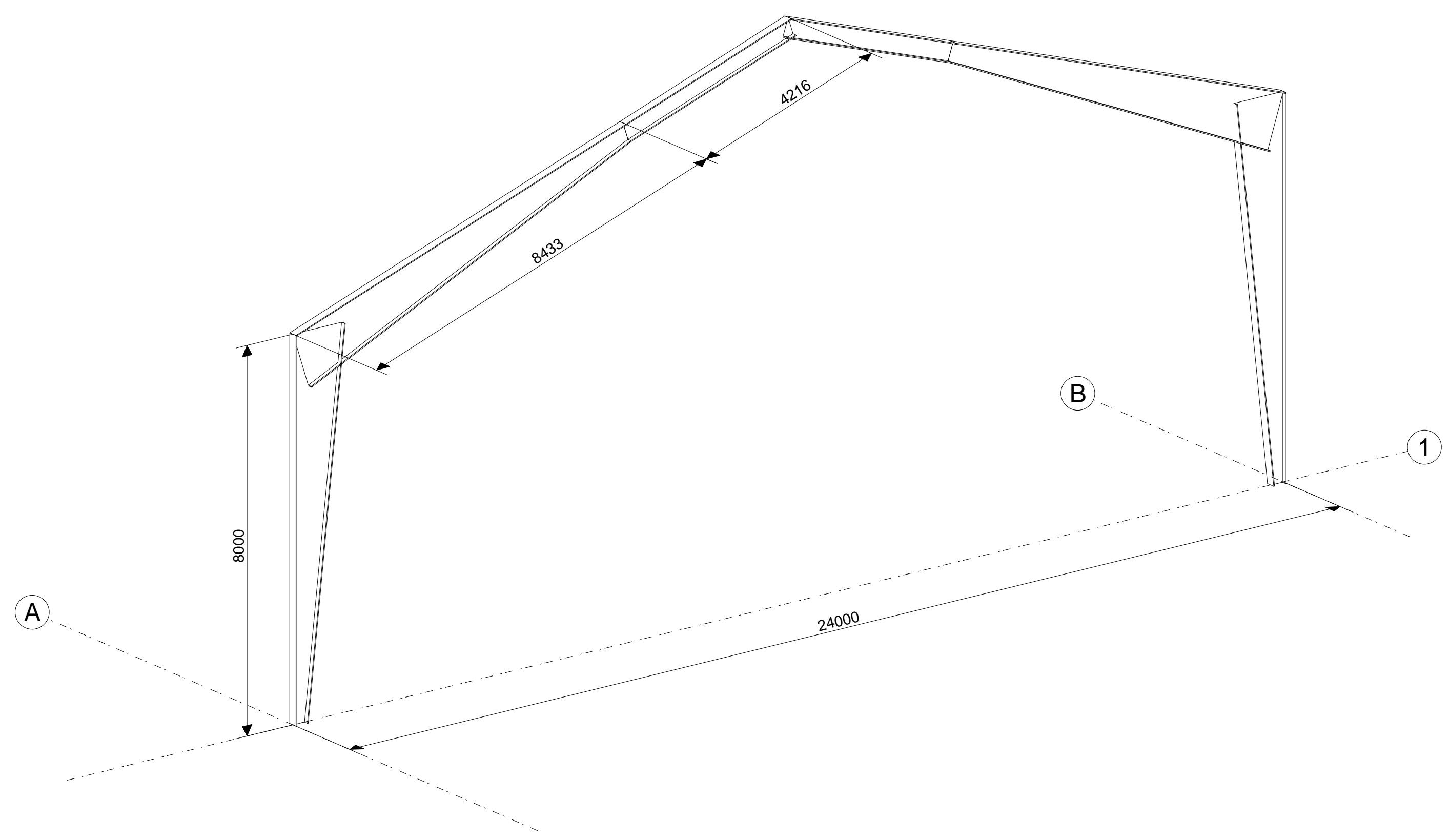


View on Line 1



A - A



3D View

Model the shown PEB structure as shown.

1. The Columns are tapered profiles starting with a height of 300 mm and ending with a height of 1200 mm.
2. The web thickness of the columns is 10mm and the flange thickness is 20mm. Flange width 200mm.
3. The first roof beam is tapered with h between 1200 and 400 mm. Web = 10mm Flange width 200 mm. Flange thickness = 20 mm.
4. The Apex height is 12000 mm. And the width of the structure is 24000 mm.
5. The Tapered members should be modelled as profiles and NOT as Plates. So use the Profile entry options in COMOSYS to achieve this result
6. The Tapered members can be entered by clicking on the profile selection, button and then going to the "Tapered" tab on the right hand side.

You can watch a tutorial here: <https://youtu.be/ySZj6A8UUSc>